



EFFORT 2
Exploration of
Footwear and
Foot
Orthoses in
Rheumatology
Treatment



PARTICIPANT INFORMATION SHEET - Service Provider Questionnaires

Title of Project: **EFFORT 2** - An exploration of the provision of shoes, insoles and splints for people with rheumatoid arthritis

Researchers: *Dr. Margaret McArthur, Principle Investigator*
Lucy Reeve, Research Associate

You are being invited to take part in this project. It is important that you understand why this is being done and what it will involve before you decide if you want to take part. Please take time to read the following information carefully and discuss it with others if you wish. Ask the researchers if anything is not clear or if you need more information. Take time to decide whether or not you wish to take part.

Thank you for reading this.

1. What is the purpose of the project?

EFFORT 2 is a development of a previous project (EFFORT 1) funded by the Arthritis Research Campaign (arc) to explore the experiences of NHS foot health interventions (defined for this project as provision of shoes, insoles and splints) in people with Rheumatoid Arthritis (RA). The findings of that first project have been used to develop this questionnaire, to further explore the experiences of health professionals when providing shoes, insoles or foot splints from the NHS. The findings from EFFORT 1 and 2 will ultimately contribute to a large report currently being planned.

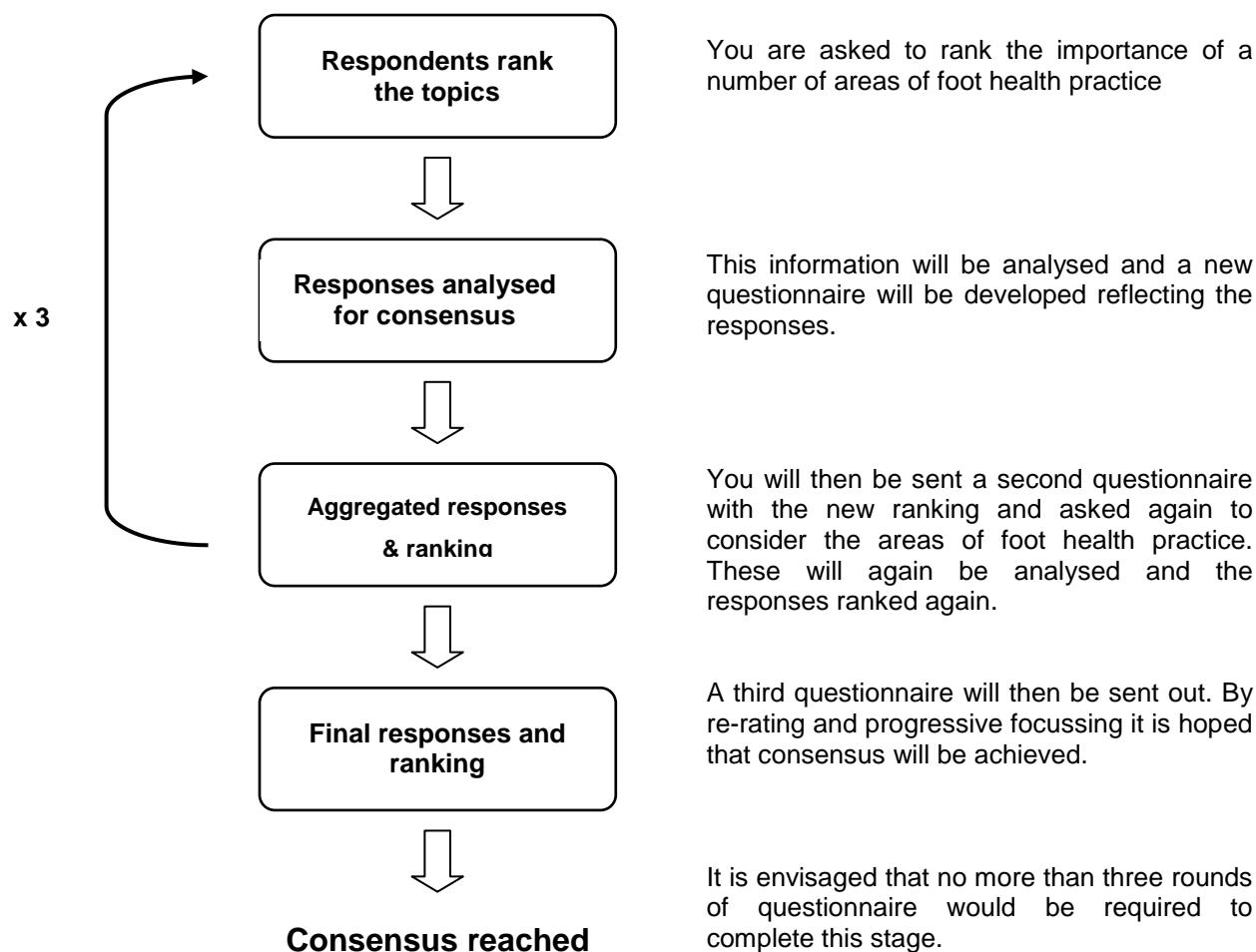
There are two aims for EFFORT 2:

1. EFFORT 1 uncovered some important information on three main issues for health professionals: Access to Services; Therapeutic Partnership; and Service Delivery. To help us to check how far these findings are true for a larger population of health professionals delivering these services we now need to see what other people think about these findings so we can be confident about what we think is happening in this important area of health care delivery – hence this questionnaire.

2. There is a current lack of established referral pathways between health professionals, resulting in referrals being on a local and possibly ad hoc basis. Simple referral guidelines may go some way to meeting patient needs. One important way of informing the establishment of those referral guidelines would be to find out what health professionals identify as their core practice. Therefore, the second part of the questionnaire will ask you to rank, the interventions that you feel constitute your core professional foot health care practice.

Using a consensus reaching method called the Delphi technique the questionnaire will be completed a number of times. The first questionnaire will ask you to comment on the findings of EFFORT 1 and to do the first Delphi ranking. This will have the

largest number of items to rank. The other two questionnaires will only ask you to rank your core practice and will have a decreasing number of items to choose from.



So, you are being asked to complete three questionnaires on three separate occasions.

2. Why have I been chosen?

You have been invited to take part in this study because you are a potential service provider of foot health services in the treatment of rheumatoid arthritis.

3. Do I have to take part?

It is up to you to decide whether or not you take part. Completion and submission of the questionnaires will be taken to indicate that you consent to your answers being used in the project. If you do decide to take part, you are still free to withdraw from the project at any time.

4. What will happen to me if I take part?

You will be asked to complete a questionnaire. The first questionnaire will take no more than 20 minutes to complete. Questionnaires 2 and 3 will take no more than 10 minutes to complete.

5. What will I have to do?

If you decide to take part in this project please either complete the questionnaire which has been sent to you or it is also available online through a link from a) a link

www.uea.ac.uk/foh/effort or b) is also available by simply clicking on the link at the end of this information sheet.

If you would like to have a paper copy of the questionnaire please contact Lucy Reeve, research associate, contact details below, who will send out a copy of the questionnaire and a reply-paid envelope.

The questionnaire asks you to provide some basic information about yourself and then it has a selection of questions about the experience of providing foot health services. Instructions for how to complete the questionnaire are provided on the questionnaire.

If you have any questions about the completion of the questionnaire you can contact Lucy Reeve or Maggie McArthur, for further advice. Contact details are provided below.

6. What are the possible disadvantages of taking part?

The researchers do not anticipate any major disadvantages to taking part in this project.

7. What are the possible benefits of taking part?

You will have the chance to comment on issues affecting service provision. The information you provide will contribute to a better understanding of the foot health services available and so may influence future service developments.

8. Will my taking part in this project be kept confidential?

All completed questionnaires will be anonymous. Confidentiality is assured. You will not be required to provide your name or address when you complete the questionnaire online. If you would like a paper copy of the questionnaire, you will need to provide your name and contact details, but these details will not be kept after the questionnaires has been posted to you. There will be no link made between any contact details and questionnaire responses.

During data collection, contact details will be kept in a separate locked filing cabinet from the questionnaire information. Any contact details will be destroyed once data collection is completed. Only the lead investigator and the research associate will have access to raw research data. All data will be kept in locked filing cabinets and on password protected computers. On completion of the project, the data will be stored in a dedicated research archive for five years after the completion of the project.

9. What will happen to the results of the project?

The results of the project will be written up by the researchers into a report. The report will be made available to a variety of interested parties. These could include people responsible for local and national health services, health professionals and other researchers. It may also be published in professional journals and presented at seminars or conferences.

The findings will also be made available to the funding body, the Arthritis Research Campaign, to inform a planned larger report on rheumatology foot health services. This report will be made available to a number of key NHS and Government stakeholders. Once the larger report has been launched a short report will be featured on participating websites and will be made available to the participating specialist sections.

10. Who is organising and funding the project?

The project is being organised by Dr Margaret McArthur, the lead investigator. She works in the School of Allied Health Professions, University of East Anglia. The research is funded by the Arthritis Research Campaign (arc).

11. Who has reviewed the project?

The project has been reviewed by the people who commissioned the research. It has received approval from the Cambridge 4 Research Ethics Committee, reference number 09/HO305/98.

12. What if any issues arise during my involvement in the project which cause me concern?

If, for any reason, you wish to make a complaint regarding any aspect of your involvement please alert Lucy Reeve, the research associate, to the issue. You may also contact the project’s Principle Investigator, Maggie McArthur.

You are under no obligation to agree to participate in this research and if you do agree you can still withdraw at any time. Thank you for reading this information sheet, if you have any further questions please contact:

<p>Lucy Reeve EFFORT 2 Research Associate School of Allied Health Professions University of East Anglia Norwich Norfolk NR4 7TJ 01603 593094 L.Reeve@uea.ac.uk</p>	<p>Dr Maggie McArthur Principle Investigator School of Allied Health Professions University of East Anglia Norwich Norfolk NR4 7TJ 01603 593299 m.mcarthur@uea.ac.uk</p>
<p>There is an answering machine so if you wish to leave your number we will call you back.</p>	

You can get independent information or advice about your rights as a research participant or about being involved in this particular research study from:

Dr Rosie Mason
School of Allied Health Professions
University of East Anglia
Norwich
NR4 7TJ
Telephone number: (01603) 592934
Email address: r.mason@uea.ac.uk

TO OPEN THE QUESTIONNAIRE PLEASE [CLICK HERE](#)